

Figure 24.1 SWSAHS Hospitals 2002/3 - Age Profile (Seps):
NEUROSURGERY *

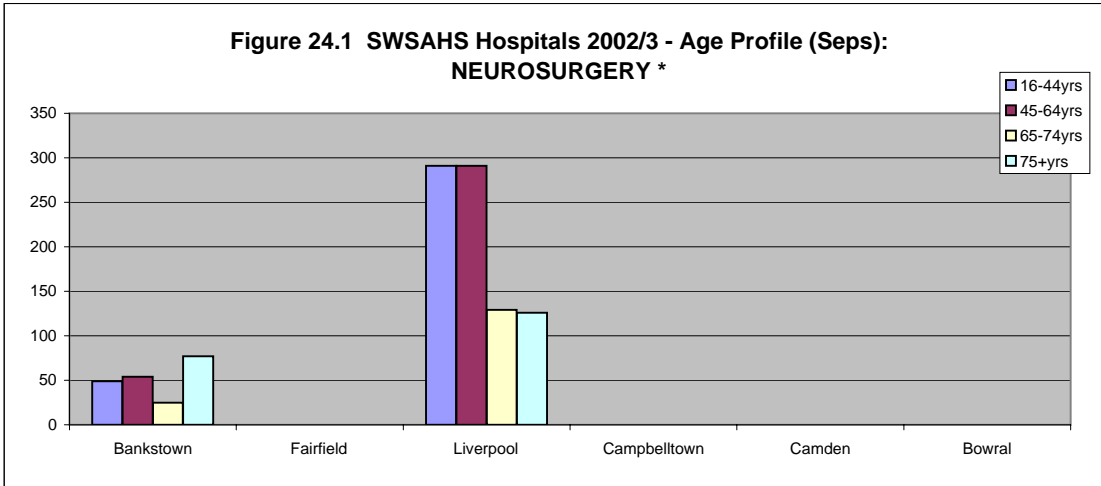
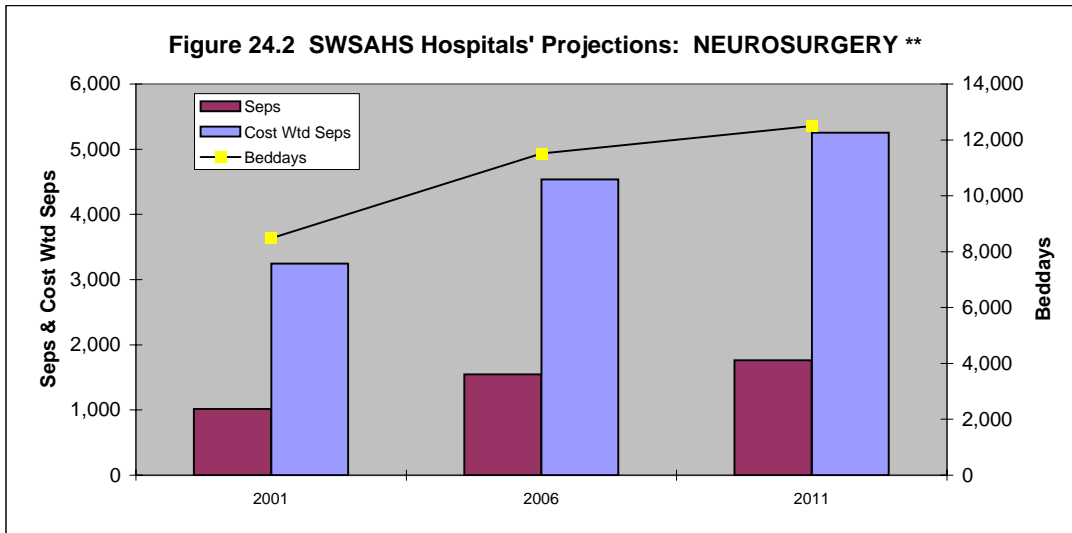


Table 24.4 SWSAHS Hospitals' Projected Activity to 2006 and 2011: NEUROSURGERY**

| | 2001 | 2006 | 2011 |
|----------------------------------|-------|--------|--------|
| Seps | 1,016 | 1,547 | 1,763 |
| Day only Seps | 107 | 219 | 271 |
| Cost Wtd Seps | 3,247 | 4,539 | 5,252 |
| Average Cost Wtd Sep | 3.20 | 2.93 | 2.98 |
| Beddays | 8,474 | 11,512 | 12,499 |
| Average LOS | 8.3 | 7.4 | 7.1 |
| Average LOS excl day only | 9.2 | 8.5 | 8.2 |
| Beds at 85% occupancy | 27.3 | 37.1 | 40.3 |
| Beds at 95% occupancy | 24.4 | 33.2 | 36.0 |

Figure 24.2 SWSAHS Hospitals' Projections: NEUROSURGERY **



* Data source: NSW Health Flowinfo V 5.1

** Data source: NSW Health APPI 2003

Acute Inpatients Aged 16+ Yrs

NB Cost wtd seps are undiscounted